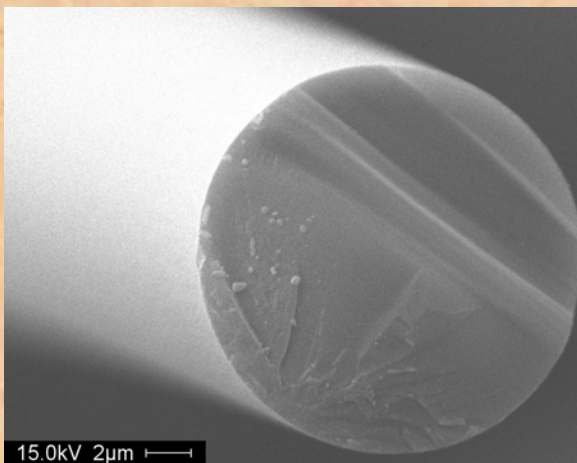


# MATECH

## ANNOUNCING COMMERCIAL AVAILABILITY

### SiNC-1400X Chopped Fiber Staple

SiNC (Silicon Nitride Carbide) fibers are melt spun in continuous 500-filament tow. SiNC fibers exhibit excellent creep resistance and are chemically stable to 1350°C with less than 2% oxygen content.



100% Amorphous (Glassy)  
Fibers In Chopped Fiber Staple

Diameter 14-18 µm

Tensile Strength 1.5 – 2.0 GPa

Young's Modulus ~150 GPa

Density 2.48g/cc

Dielectric Constant\* ~2

\*between 10-18 GHz

MATECH  
31304 Via Colinas, Suite 102  
Westlake Village, CA 91362  
p: 818.991.8500 f: 818.991.4134  
e-mail: [ed@matechgsm.com](mailto:ed@matechgsm.com)



# MATECH

## Non-Woven SiNC/SiNC CMCs

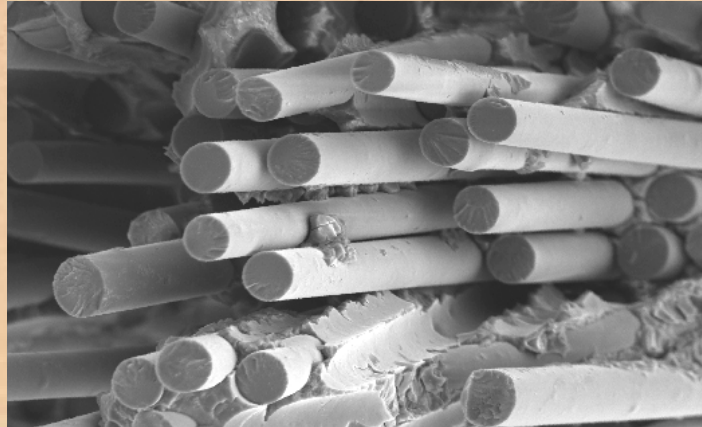


Figure 1: SEM Photomicrograph of SiNC/SiNC CMC failure.

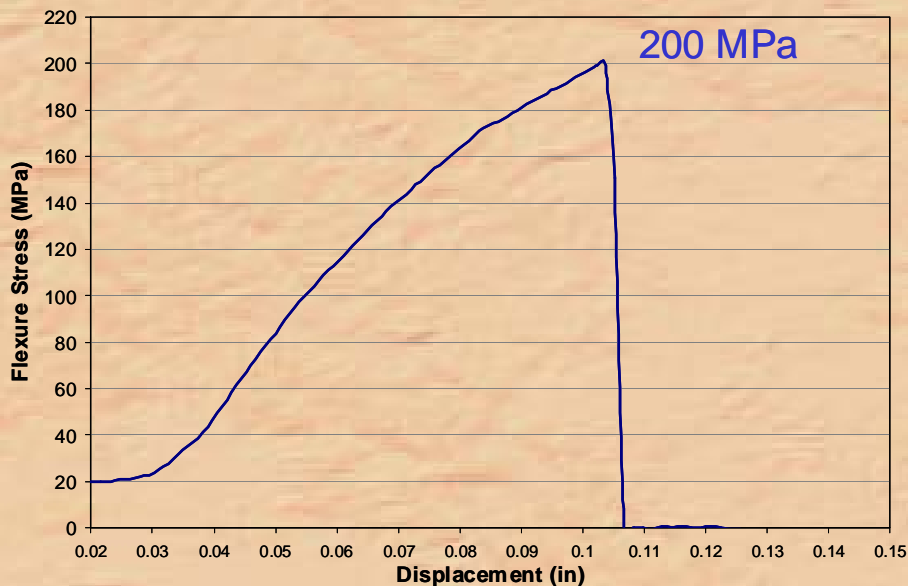


Figure 2: MOR Stress-Strain curve for SiNC/ SiNC CMC failure.

SiNC 1400X Chopped Fiber Stable can be utilized for the fabrication of low cost, non-woven ceramic matrix composites (CMCs). In Figure 1 (above), a fracture cross-section is shown in which significant fiber pullout is observed, indicative of good CMC behavior. Non-woven CMCs typically have lower fiber volumes (12-25%) compared with woven fiber CMCs (30-45%). In Figure 2, an MOR stress-strain curve is shown for a SiNC/SiNC CMC with approximately 15% fiber by volume.